



PORSCHE



# Tequipment Panamera

Accessories for the new Panamera models

# Tequipment

## **The 4th dimension.**

### **Personalisation included.**

The new Panamera. Four doors. Four seats. This car challenges the conventions of premium class saloons, and offers more than just mundane, soft seats. In other words, luxury needn't mean cumbersome. Let's call it 'dynamic luxury'. It's about journeys, in a sports car for four. It isn't about the destination, but how you get there. It's about the pure driving experience, regardless of whether you sit in the front or the back. What sets the Panamera apart? Plenty of flexible space combined with sports car technology. Typically Porsche.

Technology is what inspires Porsche Tequipment products. Refined to the very last detail, these model-specific accessories have been developed to enable

you to customise your vehicle. Forming part of a grander harmonious concept, they give your car an even sportier touch. They are what make the difference. They make the Panamera your Panamera.

Each and every component has been developed with the overall vehicle concept in mind. Not only does each component have to be visually appealing, it also has to be technically compatible. Indeed, they are all drafted in the same way as our vehicles: by the pens of our engineers and designers. Tequipment components are created in the Porsche Development Centre in Weissach, from design through to launch. Every product undergoes exhaustive testing throughout its development to ensure optimum performance and

durability. Also to make sure it meets stringent Porsche quality guidelines and standards.

Aesthetics are just as important. Among the highlights is our Yachting Mahogany wood interior, inspired by the elegant materials used in yacht construction. A stylish contrast to this dark, fine wood is achieved using lighter maple wood inlays for incomparable maritime flair. As individual as your Porsche.

Whichever Tequipment products you ask your Porsche Centre to fit, one thing remains unchanged: your original vehicle warranty.

You can find out more about the Porsche Tequipment range at [www.porsche.com](http://www.porsche.com).



Design drawing: Yachting Mahogany wood interior



Material selection: Yachting Mahogany wood



Panamera 4S with Yachting Mahogany wood interior



# Contents

## **Wheels**

From complete wheel sets featuring summer or winter tyres to wheel accessories, everything is perfectly matched to your vehicle.

## **6 Interior**

Options for personalising the interior. Classic, pure or sporty.

**14**



**Audio and communication**

**26**

With these products, you can turn your Panamera into a mobile communications centre.

**Transport and car care**

**32**

Intelligent transport solutions, Porsche child seats and care products for your car.

**Service**

**44**

This page provides a brief insight into the world of Porsche.

**Index**

**46**



# Wheels

**Make the road feel special.**



The wheels of the Panamera all have one thing in common: classic sportscar design. Fine-spoked, lightweight and exciting, their sizes

range from 18 to 20 inches. Their light-alloy construction reduces unsprung masses and allows a direct glimpse of the Porsche

brake system. Another example of sporty styling, it's a design that promises to make the difference: even more driving pleasure.



20-inch 911 Turbo II Design wheels with summer tyres

**20-inch 911 Turbo II Design wheels with summer tyres**

This set of wheels with summer tyres is both powerful and dynamic. The fine-spoked design of the forged alloy wheels with a two-tone finish is the epitome of individuality on the road.

Provisionally available from 01/2010.

**20-inch RS Spyder Design wheels with summer or winter tyres**

This design takes its cues from the wheels that adorned the successful Porsche RS Spyder race car. The prominent features of these sporty, lightweight forged aluminium wheels are the seven u-shaped dual-arm spokes and the polished wheel rim. Wheels come with a choice of summer or winter tyres.

**19-inch Panamera Turbo wheels with summer or winter tyres**

Uncompromisingly sporty and designed for supreme performance. Harmonious down to the very last detail. These alloy wheels with five dual-arm spokes allow a direct glimpse of the Porsche brakes. Wheels come with a choice of summer or winter tyres.



**19-inch Panamera Design wheels with summer tyres**

These alloy wheels may be perfect for everyday use, but they are anything but ordinary. Their styling is as unique as that of the Panamera itself. Five intricate v-shaped spokes give these wheels a supremely elegant look.

**18-inch Panamera S wheels with winter tyres**

These sporty classic wheels are characterised by their strong grip and unique styling, and make an important contribution to safety in the cold season.

Not compatible with the Panamera Turbo.

For further product information and part numbers, please refer to the Tequipment Panamera price list.

See pages 10 and 11 for wheel and tyre specifications.



20-inch RS Spyder Design wheels with summer or winter tyres



19-inch Panamera Turbo wheels with summer or winter tyres



19-inch Panamera Design wheels with summer tyres



18-inch Panamera S wheels with winter tyres

## Note on the use of winter tyres

Summer tyres provide optimum performance at ambient temperatures above +7 °C. Below this point, the tyre compound begins to harden and braking distances are increased. We therefore recommend that you fit winter tyres during the colder months of the year. Only then can you enjoy the highest standards of active safety from your Panamera. All winter tyres approved by Porsche are identified by an 'N' designation on the sidewall.

- Compatible with vehicle
- Not compatible with vehicle
- <sup>1</sup> Winter tyres to a maximum of 240 km/h (149 mph).
- <sup>2</sup> Compatible with snow chains.
- <sup>3</sup> Not compatible with Porsche Ceramic Composite Brake (PCCB).
- <sup>4</sup> Standard on Panamera Turbo.
- <sup>5</sup> Provisionally available from 01/2010.

The wheel centres shown are not included. If your vehicle documents do not contain details of the wheel and tyre combination, please request a technical approval certificate from your Porsche Centre.

All tyres are designed exclusively for Porsche as indicated by the special Porsche designation (NO, N1, etc.) on the sidewall. Tyres that do not carry this designation are not recommended for use on your Porsche.

	Panamera S	Panamera 4S	Panamera Turbo
	■ <sup>5</sup>	■ <sup>5</sup>	■ <sup>5</sup>
	■	■	■
	■	■	■ <sup>3,4</sup>
	■	■	■ <sup>3</sup>
	■ <sup>1,2</sup>	■ <sup>1,2</sup>	■ <sup>1,2</sup>
	■ <sup>1,2</sup>	■ <sup>1,2</sup>	■ <sup>1,2,3</sup>
	■ <sup>1,2,3</sup>	■ <sup>1,2,3</sup>	–

Product	Wheel dimensions (offset (ET) in mm)	Tyre specifications
<b>20-inch 911 Turbo II Design wheels with summer tyres</b>	Front: 9.5J x 20 ET 65 Rear: 11J x 20 ET 68	Front: 255/40 ZR 20 (101 Y) XL Rear: 295/35 ZR 20 (105 Y) XL
<b>20-inch RS Spyder Design wheels with summer tyres</b>	Front: 9.5J x 20 ET 65 Rear: 11J x 20 ET 68	Front: 255/40 ZR 20 (101 Y) XL Rear: 295/35 ZR 20 (101 Y) XL
<b>19-inch Panamera Turbo wheels with summer tyres</b>	Front: 9J x 19 ET 60 Rear: 10J x 19 ET 61	Front: 255/45 ZR 19 (100 Y) Rear: 285/40 ZR 19 (103 Y)
<b>19-inch Panamera Design wheels with summer tyres</b>	Front: 9J x 19 ET 60 Rear: 10J x 19 ET 61	Front: 255/45 ZR 19 (100 Y) Rear: 285/40 ZR 19 (103 Y)
<b>20-inch RS Spyder Design wheels with winter tyres</b>	Front: 9.5J x 20 ET 65 Rear: 10.5J x 20 ET 65	Front: 255/40 R 20 101 V XL Rear: 285/35 R 20 104 V XL
<b>19-inch Panamera Turbo wheels with winter tyres</b>	Front: 9J x 19 ET 60 Rear: 10J x 19 ET 61	Front: 255/45 R 19 100 V Rear: 285/40 R 19 103 V
<b>18-inch Panamera S wheels with winter tyres</b>	Front: 8J x 18 ET 59 Rear: 9J x 18 ET 53	Front: 245/50 R 18 100 V Rear: 275/45 R 18 103 V



Snow chains

### **Snow chains**

Specially designed for Porsche models and featuring ultra-fine links for minimal adhesion of ice and snow.

### **Wheel centres**

Set of wheel centre caps with full-colour Porsche Crest. The perfect finishing touch for any Panamera wheel.

Not compatible with the 20-inch 911 Turbo II Design wheel.

### **Crested valve caps**

Silver-coloured valve caps with embossed Porsche Crest.

Please refer to the wheel specification tables on pages 10 and 11 for further product information.



Wheel centres



Crested valve caps



# Interior

**Sportiness and comfort are mutually exclusive.  
Or so you thought.**



The new Panamera offers an excellent combination of sportiness, comfort, flexibility and personal freedom.

Freedom, for example, to customise the interior. After all, the Porsche of your dreams has never

been so within your reach. How about creating a little more individuality by selecting the Yachting Mahogany or Natural Olive wood interior? Or even one of our other high-quality materials such as carbon or brushed aluminium? Each material is available as part

of our Tequipment interior packages. Give your Panamera its own unique character. Even more sporty, even more exclusive? The choice is yours. The following pages will give you all the inspiration you need.



Brushed aluminium interior package

### **Burr walnut**

A classic, high-quality dark wood with a unique and appealing grain.

### **Tineo**

This light, reddish-brown hardwood from the South American Andes creates a very elegant look thanks to its striking horizontal grain.

### **Anthracite birch**

This anthracite-coloured birchwood has an attractive wavy grain, an impressive dual-tone effect and a silky sheen.

### **Natural olive**

A high-quality ash wood with an olive grain and a silky matt sheen, giving a combination of elegance, individuality and luxury.

### **Yachting Mahogany**

Inspired by the construction of exclusive yachts, mahogany is a fine dark wood. Light maple inserts provide a stylish contrast.

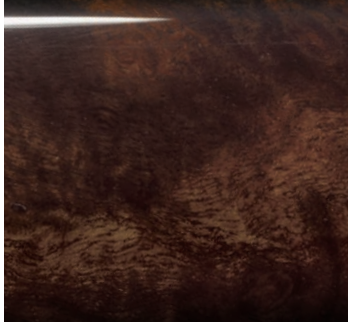
### **Carbon**

Carbon is a light but highly durable material which has its origins in motorsport. Its high-tech look gives a sporty feel to the interior.



## Aluminium

Aluminium – brushed or high-gloss  
– is a lightweight alloy which  
accentuates the finer details of  
your Panamera.



Burr walnut

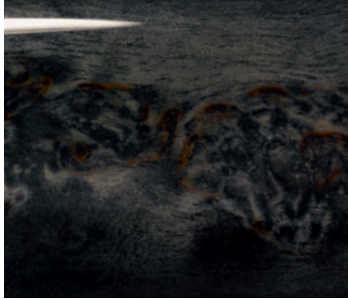


Tineo

## Alcantara

This high-quality material is easy  
to care for, washable and has  
excellent non-slip properties.

Since wood is a natural product,  
there may be variations in colour  
and grain.



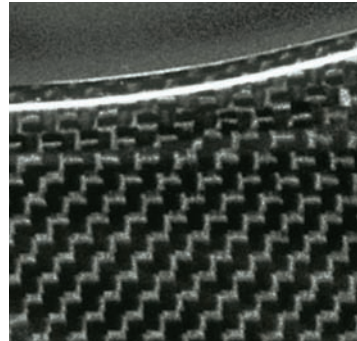
Anthracite birch



Natural olive



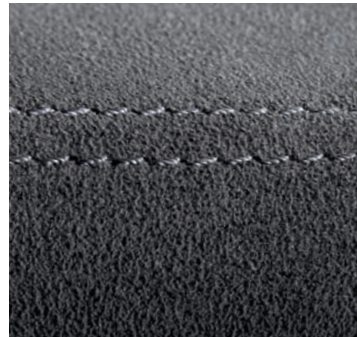
Yachting Mahogany



Carbon



Brushed aluminium



Alcantara



Interior in carbon

### **Interior packages**

Would you like to make your Panamera even more individual, even more refined, or even sportier? Our range of interior packages enables you to choose the finish you would like for selected interior features, which include the dashboard decorative trim, the decorative trims on the doors, the centre console lower section, the decorative plate, the front ashtray

cover, the cupholder cover in the rear and the storage compartment lid on the rear centre console. Packages are available in burr walnut, tinea, anthracite birch, natural olive, Yachting Mahogany<sup>1</sup>, carbon or brushed aluminium.

<sup>1</sup> Provisionally available from 11/2009.

### **Extended trim package**

The extended trim package creates an outstanding effect when combined with one of our interior packages, but is equally attractive on its own. The extended trim package comprises the PDK<sup>2</sup> gear selector in aluminium and the multifunction steering wheel rim (not including airbag module). The multifunction steering wheel rim is available in burr walnut, tinea,



Interior in Yachting Mahogany

anthracite birch, Yachting Mahogany or carbon.

Only available for vehicles with PDK and multifunction steering wheel.

Provisionally available from 11/2009.

<sup>2</sup> 7-speed Porsche Doppelkupplung (PDK).



Extended trim package in carbon



Cooling compartment in the rear

### **Cooling compartment in the rear**

The cooling compartment integrated between the individual seats in the rear has a capacity of 10.5 litres and features a separate on/off switch. It chills to a temperature of approximately 6 °C. Two drinking glasses featuring an engraved Porsche Crest and logo are included. The cooling compartment is accessible through the opening in the large rear centre console located between the seats.

Only available for vehicles with large centre console in the rear.

Not compatible with the reversible loadspace mat, the luggage net or the cargo liner.

Cooling compartment reduces luggage compartment capacity.

Provisionally available from 12/2009.

### **PDK gear selector in aluminium**

Specially designed PDK gear selector in aluminium. The PDK gear selector inlays feature leather trim in the interior colour.

### **PDK gear selector in Alcantara**

This gear selector highlights Porsche's close association with motorsport. Finished in black Alcantara.

Provisionally available from 12/2009.



PDK gear selector in aluminium



PDK gear selector in Alcantara



Reversible loadspace mat with nubuck edging

### **Reversible loadspace mat with nubuck edging**

This reversible mat with loading edge protection shields the luggage compartment from dirt and protects the vehicle paintwork from scratches during loading. One side is trimmed in velour in the interior colour, the other side features a hard-wearing, non-slip rubber surface.

Not available in conjunction with cooling compartment in the rear.

### **Floor mats with nubuck edging**

Precision down to the last detail: four made-to-measure floor mats with nubuck edging and Porsche logo, which have a waterproof backing and are non-slip. Floor mat displacement is prevented by a special securing system.

### **Rubber floor mats**

Four made-to-measure floor mats in an appealing design featuring the Panamera silhouette. Non-slip and waterproof.

### **Sun/privacy screen (not shown)**

Protects against direct sunlight and at the same time provides additional privacy. Attaches to the rear screen by a system of clips.

Provisionally available from 10/2009.

### **Two fold-out cupholders above the glove compartment**

Two fold-out cupholders with adjustable diameter. Integrated above the glove compartment behind the dashboard trim.

Provisionally available from  
10/2009.

For further product information  
and part numbers, please refer  
to the Tequipment Panamera  
price list.



Floor mats with nubuck edging



Rubber floor mats



Two fold-out cupholders the above glove compartment



Door sill guards in carbon

## Door sill guards

For a sporty and striking effect, illuminated or non-illuminated door sill guards provide a stylish and dramatic finishing touch. Those featuring a white illuminated model logo are a special highlight. Fitted front and rear, the door sill guards are available in either carbon, a

material reminiscent of the race track, or brushed aluminium, a durable material with a classy look.

Available with 'Panamera S', 'Panamera 4S' or 'turbo' logo.

Provisionally available from 10/2009.

For further product information, please refer to the Tequipment Panamera price list.





Door sill guards in carbon, illuminated



Door sill guards in brushed aluminium, illuminated



# Audio and communication

**What's the best thing about finding something you want?**

**When you don't even have to look.**



Comfort and sportscar technology side by side. For many, this may be surprising. For you, it's simply Porsche. This also applies to our

communication systems: cutting-edge technologies with intuitive controls. Multifunctional, and customisable.



Vehicle tracking system

### **Vehicle tracking system**

Enables remote location of a stolen vehicle within 27 European countries as well as Russia and South Africa. Location is not continual, but occurs only in the event of an alarm. A silent alarm is automatically triggered if the car is stolen or tampered with, or after notification from the vehicle owner. In addition to the extra security offered by this system, it may also, depending on the country, reduce your insurance premium. The system has been tested using

multiple simulated thefts in order to ensure that the service fully meets Porsche quality requirements. Your Porsche Centre will be happy to provide you with further information.

Only available for vehicles already equipped with preparation for vehicle tracking system.

A separate contract with the service provider recommended by your Porsche Centre is required, which is subject to additional charges.

### **Electronic logbook**

The optional electronic logbook enables automatic recording of mileage, route distance, time and date, starting point and destination as part of every journey. Once you have downloaded the logbooks from PCM via the USB or Bluetooth® interface, you can evaluate the data on your home PC using the software supplied.

Only available for vehicles with PCM.

Provisionally available from 12/2009.

### Telephone module

The GSM telephone module offers convenience and excellent reception. By inserting a SIM card directly into the PCM's integral SIM card reader, calls can be made using either the hands-free facility or the optionally available cordless handset. For even more convenience, the Bluetooth® capability of a mobile phone can be used to make calls through the SIM Access Profile (SAP)<sup>1</sup>.

<sup>1</sup> Bluetooth® pairing is possible only if the mobile phone supports the SIM Access. For information on compatible mobile phones, please contact your Porsche Centre or visit [www.porsche.com](http://www.porsche.com).

Only available for vehicles with PCM.

Provisionally available from 12/2009.



Electronic logbook



Telephone module



Cordless handset for telephone module

### **Cordless handset for telephone module**

Bluetooth® handset display and separate keypad for making telephone calls discreetly.

Only available for vehicles with PCM and telephone module.

Operation of the Bluetooth® handset is not supported in Handsfree Profile (HFP) mode.

Provisionally available from 12/2009.

### **Universal audio interface**

Available in conjunction with PCM, an AUX port, a USB interface and a separate iPod® connection are integrated into the centre console armrest. Your iPod®, or an MP3 player or USB stick connected to the USB interface, can be operated using PCM.

Only available for vehicles with PCM.

Provisionally available from 12/2009.

### **Mobile phone preparation**

To enable a Bluetooth® connection for those mobile phones that support the Handsfree Profile (HFP), an optional mobile phone preparation is available. With HFP, PCM acts as a hands-free system. Using PCM, it is possible to control the basic functions of the mobile phone. The GSM connection is established through the mobile phone's aerial.

Only available for vehicles with PCM.



Universal audio interface

Provisionally available from  
12/2009.

For further product information  
and part numbers, please refer to  
the Tequipment Panamera price list.



Mobile phone preparation



# Transport and car care

**The Panamera has space for four.**

**Luggage included.**

**Not only on the inside.**





Four adults and their luggage in a sports car? Yes, it is possible in the new Panamera.

The interior of the Panamera offers occupants plenty of space and comfort. For children, we have a range of optional Porsche child seats.

Our roof transport systems ensure that even bulky items of luggage can be accommodated. A rear-mounted bike carrier is also available.

The cargo liner shields the luggage compartment from dirt.

The luggage net holds items safely in position. A car cover protects the exterior of your vehicle. We also offer a range of car care products so that your Panamera always makes an excellent, sporty impression.



## Child seats

Travelling in a Porsche is not just for grown-ups. With Porsche Tequipment child seats, it's for the little ones, too. Now passengers below the age of 12 need never miss out.

### **Porsche child seats**

Porsche child seats in a new design, meeting the latest safety standards. Specially tested and approved for Porsche cars, they provide protection and comfort to

passengers up to 12 years of age. The fabrics are breathable and easy to clean with a removable and washable cover in black and grey with a contrasting red trim. The Porsche child seats can be

Child seats for Panamera	Models	Group	Weight	Age	Panamera front	Panamera rear
	Porsche Baby Seat ISOFIX, G 0+	0+	Up to 13 kg	Up to approx. 18 months	Yes <sup>1</sup>	Yes
	Porsche Junior Seat ISOFIX, G 1	1	9 to 18 kg	From approx. 9 months to 7 years	Yes <sup>1</sup>	Yes
	Porsche Junior Plus Seat, G 2 + G 3	2+3	15 to 36 kg	From approx. 3½ to 12 years	Yes	Yes

<sup>1</sup> The use of a Porsche child seat on the front passenger seat is permitted only in conjunction with the ISOFIX child seat mounting system (pre-delivery option order no. 899).

fixed conveniently and safely. For increased safety, the Porsche Baby and Porsche Junior Seat ISOFIX have an independent five-point belt system.



Roof transport system

# Transport

## **Roof transport system**

Versatile base carrier offering maximum roof load of up to 70 kg. Compatible with a wide range of load-carrying attachments. Includes anti-theft security caps and locks.

Rear hatch opening may be partially reduced when carrying longer roof loads.

## **Bike carrier**

Lockable carrier for standard adults' and children's bikes up to a maximum frame-tube diameter of 85 mm. Up to three bike carriers can be mounted on the roof transport system.

## **Roof box (narrow)**

Lockable plastic roof box in Silver Grey with a capacity of

approximately 310 litres and integrated ski holder. Can be opened from either side of vehicle. Dimensions: L 2,260 x W 550 x H 380 mm.

## **Roof box (wide)**

Lockable plastic roof box in a black, high-gloss finish with a capacity of approximately 520 litres and integrated ski holder. Can be



Bike carrier



Roof box (narrow)

opened from either side of  
vehicle. Dimensions:  
L 2,180 x W 895 x H 400 mm.



Roof box (wide)



Ski/snowboard carrier

### **Ski/snowboard carrier**

Two versions are available: one for up to four pairs of skis or up to two snowboards and one for up to six pairs of skis or up to four snowboards.

### **Surfboard carrier**

Carrier for the safe transport of board and mast.

### **Boat carrier**

Mounting system for the safe transport of a boat.

Not suitable for rubber dinghies.

### **Rear-mounted bike carrier**

Lockable, hinged aluminium rear-mounted carrier in a black finish for up to two bicycles. Mounts on towbar system.

Only available in conjunction with towbar system.

**Expansion kit for  
rear-mounted bike carrier**

Expansion kit for the transport of  
a third bicycle on the rear-mounted  
bike carrier.

Only available in conjunction with  
rear-mounted bike carrier.



Surfboard carrier



Boat carrier



Rear-mounted bike carrier



Outdoor car cover

### **Outdoor car cover**

Tailored outdoor cover in silver-coloured fabric with Porsche Crest and logo. Water-repellent and breathable, it provides excellent protection against a range of weather conditions including strong sunlight. Includes anti-theft protection.

### **Indoor car cover**

Tailored indoor cover made from breathable and antistatic fabric. With full-colour Porsche Crest and logo.

### **Luggage net**

Floor net for holding items in the luggage compartment safely in

position. The easy-to-use net is attached to the lashing eyelets on the luggage compartment floor by four integral hooks. The net's highly elastic material enables you to vary its tensioning force.

Not available in conjunction with cooling compartment in the rear.



### **Coolbag**

Handy coolbag for chilling food and drinks. Features a 12-volt connection and a capacity of 12 litres. Porsche-patented securing system for safe transport. Features deep-discharge protection for the car battery.



Indoor car cover

### **Cargo liner (not shown)**

Waterproof and washable, this made-to-measure liner in black plastic protects the luggage compartment from dirt. Ideal for transporting shopping or sports equipment to and from the car.

Not available in conjunction with cooling compartment in the rear.

Provisionally available from 10/2009.



Luggage net



Coolbag



Wheel cleaning kit

### **Wheel cleaning kit**

Care products and brush set for alloy wheels. Cleaning fluid also available separately as a refill.

### **Porsche Charge-o-mat II**

Battery charger with charge maintenance and monitoring function. An adapter is available for vehicles without a cigarette lighter.

### **Car-care case**

Aluminium case containing high-quality car-care products approved for your Porsche. Includes shampoo, wax, glass cleaner, leather cleaner and conditioner. All products are available separately.

### **Ice scraper**

Practical accessory featuring an aluminium telescopic handle enabling easy removal of ice and snow from your Porsche. Integral rubber lip for removing water.

### **Interior care kit**

Contains cleaning products and accessories, including velour cleaner, leather cleaner and conditioner and glass cleaner.

### Rechargeable torch

Handy torch with fold-out magnifying lens. Rechargeable via the cigarette lighter.



Porsche Charge-o-mat II

### Tool kit

Selection of tools for home and car use in high-quality leather case.



Car-care case

### Microfibre cleaning cloths (not shown)

Set of three microfibre cloths enabling the PCM touchscreen and other delicate interior surfaces to be cleaned safely and efficiently.

For further product information and part numbers, please refer to the Tequipment Panamera price list.



Ice scraper



Interior care kit



Rechargeable torch



Tool kit



### **Porsche Centres**

Your Porsche Centre can assist you with every aspect of purchasing and owning your Porsche. You will also find a wide range of products and services, including genuine Porsche parts and accessories.



### **Porsche Assistance**

Enjoy peace of mind with our exclusive breakdown and accident recovery service. Membership is free when you buy a new Porsche.



### **Porsche Financial Services**

Our innovative suite of financial services is specially tailored to the needs of Porsche owners. Products range from attractive finance and leasing options to vehicle insurance and the Porsche Card.

# Service

### **Porsche Used Car Programme**

Porsche Approved is the simple way to find the perfect pre-owned Porsche, anywhere in the world. Every car is rigorously tested and comes with a comprehensive vehicle warranty.



### **Porsche Classic**

Your specialist source for genuine Porsche parts and technical documentation as well as servicing, repair and restoration for all types of classic Porsche. Find out more at [www.porsche.com/classic](http://www.porsche.com/classic).



### **Christophorus**

Our bi-monthly magazine for Porsche owners has news, interviews and a wide variety of features from throughout the world of Porsche.





### **Porsche Exclusive**

Realise your vision of the perfect Porsche with our factory customisation programme. From styling enhancements to performance upgrades, all modifications are uniquely handcrafted for your Porsche.

### **Tequipment Online**

You've already taken delivery of your Porsche. Are you now thinking of giving it a personal touch? Our Tequipment range of accessories is also available online at [www.porsche.com](http://www.porsche.com).

### **Porsche Design**

#### **Driver's Selection**

With products ranging from fashion and accessories to tailored luggage, this unique collection combines quality and style with everyday practicality.



### **Porsche Online**

For all the latest news and information from Porsche, go to [www.porsche.com](http://www.porsche.com).

### **Porsche Clubs**

Since the first Porsche Club was founded in 1952, their number has grown to 613 with a total of 120,000 members worldwide. To find out more, call +49 (0)711 911-78307 or go to [www.porsche.com](http://www.porsche.com).

### **Porsche Driving Experience**

#### **1. Porsche Travel Club.**

Exclusive driving holidays and incentive ideas combining luxury and adventure, worldwide. To find out more, call +49 (0)711 911-78155. E-mail: [travel.club@porsche.de](mailto:travel.club@porsche.de)

#### **2. Porsche Sport Driving School.**

Develop your skill and explore your Porsche with the Porsche Sport Driving School. To learn about events at some of the world's most famous racing venues, call +49 (0)711 911-78683. E-mail: [sportdrivingschool@porsche.de](mailto:sportdrivingschool@porsche.de)



Ask your Porsche Centre for the latest brochures from Porsche Exclusive, Porsche Design Driver's Selection and the Porsche Driving Experience.

# Index

<b>1</b>				
20-inch 911 Turbo II Design wheel	8			
20-inch RS Spyder Design wheel	8			
19-inch Panamera Turbo wheel	8			
19-inch Panamera Design wheel	9			
18-inch Panamera S wheel	9			
<b>B</b>				
Bike carrier	36			
Boat carrier	38			
<b>C</b>				
Car-care case	42			
Cargo liner	41			
Coolbag	41			
Cooling compartment in the rear	20			
Cordless handset for telephone module	30			
Crested valve caps	12			
<b>D</b>				
Door sill guards	24			
<b>E</b>				
Electronic logbook	28			
Expansion kit for rear-mounted bike carrier	39			
<b>F</b>				
Floor mats	22			
<b>I</b>				
Ice scraper	42			
Indoor car cover	40			
Interior care kit	42			
Interior materials	16			
Interior packages	18			
<b>L</b>				
Luggage net	40			
<b>M</b>				
Microfibre cleaning cloths	43			
Mobile phone preparation	30			
<b>O</b>				
Outdoor car cover	40			
<b>P</b>				
PDK gear selector	20			
Porsche Charge-o-mat II	42			
Porsche child seats	34			
<b>R</b>				
Rear-mounted bike carrier	38			
Rechargeable torch	43			
Reversible loadspace mat with nubuck edging	22			
Roof boxes	36			
Roof transport system	36			
<b>S</b>				
Service	44			
Ski/snowboard carrier	38			
Snow chains	12			
Sun/privacy screen	22			
Surfboard carrier	38			



20-inch RS Spyder Design wheels with summer tyres

**T**

- Telephone module 29
- Tool kit 43
- Two fold-out cupholders  
above glove compartment 22

**U**

- Universal audio interface 30



Multifunction steering wheel rim in Yachting Mahogany

**V**

- Vehicle tracking system 28

**W**

- Wheel accessories 12
- Wheel centres 12
- Wheel cleaning kit 42
- Wheel specifications table 10



Telephone module



Ski/snowboard carrier



Porsche strongly recommends the use of genuine Porsche parts and accessories. Porsche cannot accept liability for damages resulting from the use of third party products.

Porsche reserves the right to alter specifications and other product information without notice. Colours and materials may differ from those illustrated.

Errors and omissions excepted.

Products may vary from market to market due to local restrictions and regulations.

The models illustrated may feature optional equipment that is not included in the respective Tequipment package.

For more information on selected Tequipment products, see our online shop at [www.porsche.com](http://www.porsche.com).

Porsche, the Porsche Crest, Panamera, 911, Carrera, PCM, PCCB, PDK and Tequipment are registered trademarks of Dr. Ing. h.c. F. Porsche AG  
Porscheplatz 1  
70435 Stuttgart, Germany  
[www.porsche.com](http://www.porsche.com)  
© Dr. Ing. h.c. F. Porsche AG, 2009

Edition: 09/09

Printed in Germany

WSP1001000620 GB/WW